

CLINICALLY RELEVANT RADIOLOGY REPORTING



CHIROPRACTIC RADIOLOGY EXAMPLE REPORT

PRO CHIRO RADIOLOGY

A: Level 50, 120 Collins Street, Melbourne VIC 3000, Australia | T: 1300 243 110 | I: +61 3 8373 4000 | F: +61 3 8373 4099 | E: info@prochiroradiology.com

www.prochiroradiology.com

Our radiology reports lead the industry by setting the benchmark for quality and clinical relevance, reported by our team of World leading Chiropractic Radiologists

Clinical Details:

Episodic Neck pain.
Hx of motorcycle accident

Cervical Spine

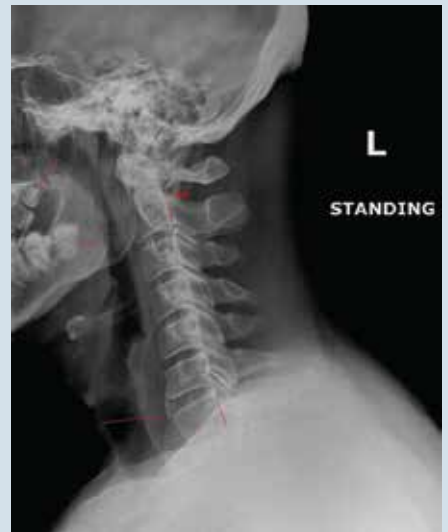
Advanced reduction in the cervical lordosis measuring 6.6 degrees with gentle reversal extending from C2-C5. A minor cervico-thoracic dextroconvexity is noted measuring just a few degrees with left inferior Atlas. Early loss of intervertebral disc height is appreciated from C2-C7 with posterior disc wedging at C6/7. Anterior body osteophyte formation at C6 with an intercalary bone noted in the anterior annular fibres of C6/7. Early facet sclerosis is seen without significant hypertrophy. The unciniate processes appear normal. Normal atlanto-axial joint spaces. Normal bone density. The pre-vertebral soft tissues are unremarkable. Unerrupted maxillary and mandibular 3rd molar teeth with disto-angulation of the left mandibular third molar (48).

Clinical Impression:

1. Hypolordosis with minor mid-cervical reversal
2. Mild cervico-thoracic dextroconvexity
3. Mild DDD
4. Mild facet arthrosis
5. Mild spondylosis C5/6
6. Intercalary bone C6/7
7. Unerrupted mandibular and maxillary 3rd molar teeth

Radiographic QA:

The radiographic exposure quality and patient positioning is satisfactory.



Report: Dr. Kristin L Grace DC, DACBR/Dr Martin Timchur DC

NEWSLETTER

To receive up to date industry information, Practice Management Tips, Equipment Reviews, Legislative updates, and Tech Tips then subscribe to our Newsletter by visiting www.prochiropradiology.com/subscribe

WEBINAR

Do you need to keep your CPD/CPE up to date, then make sure you join our next Webinar and join in on the presentations and discussions by respected industry experts. Visit www.prochiropradiology.com/webinar to register.

REPORTING SERVICES

We welcome new clinics to PRO Chiropractic Radiology who are not enjoying the benefits of sub-specialty reporting. Email info@prochiropradiology.com to find out how you can join our reporting services or call our team on 1300 243 110